

Vernis Blend

Electronic basin mixer for cold water or pre-adjusted water battery operation

Surfaces: **Chrome** Article Number: **71503000**



Description

product features

- ComfortZone 100
- projection 112 mm
- spray type: normal spray
- swiveling spray former
- maximum flow rate at 3 bar: 5 l/min
- for cold water or pre-adjusted/conditioned water
- with isolated water conduction - without contact with nickel and lead
- suitable for continuous flow water heaters
- infrared sensor technology
- automatic environmental adjustment of infrared sensor
- battery condition indicator available
- battery operation 6 V Lithium-battery, type CR-P2 (lifetime approx. 7 years, at 150 actuations per day, battery included in scope of supply)
- running time adjustable
- running time: 10 s, 20 s, 30 s
- hygiene rinse activatable (automatic water flow)
- frequency of hygiene rinse: 24 h, 48 h, 72 h
- flushing time hygiene rinse: 10 s, 20 s, 30 s
- permanent rinse activatable (single water flow for 200 seconds, suitable for thermal disinfection)
- cleaning mode: manual water stop for washbasin cleaning
- connection dimension: DN15
- dirt filter in the connection hose
- frequency of hygiene rinse and flushing time hygiene rinse are dependent on each other (24 h - 10 s, 48 h - 20 s, 72 h - 30 s)

Technology



L 91

Vernis Blend

Electronic basin mixer for cold water or pre-adjusted water battery operation

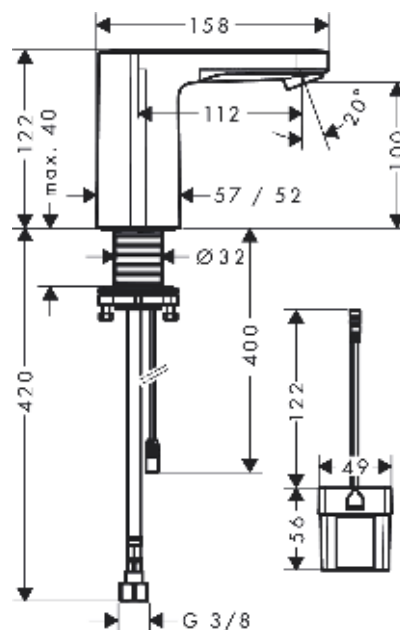
Surfaces: **Chrome** Article Number: **71503000**



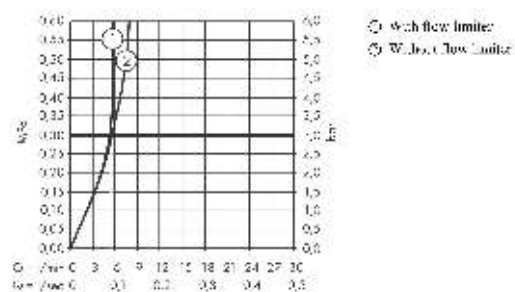
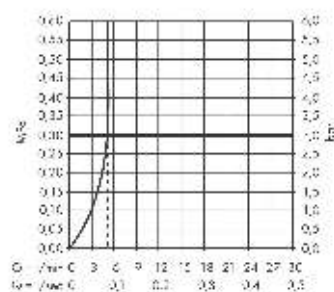
Product image



Scale drawing



Flowchart



Vernis Blend

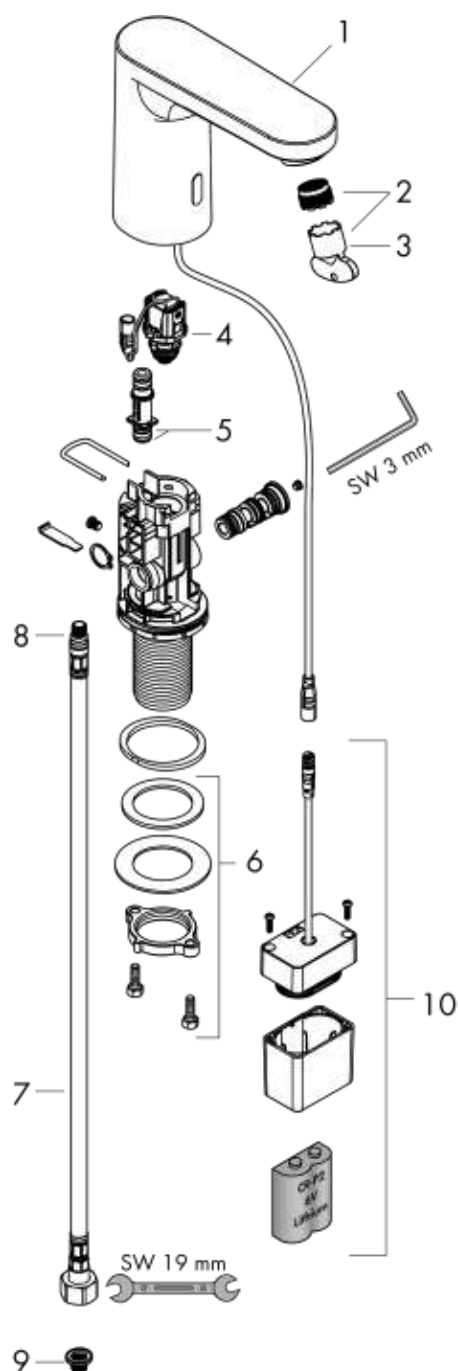
Electronic basin mixer for cold water or pre-adjusted water battery operation

Surfaces: **Chrome** Article Number: **71503000**



Exploded Drawing

Year of production: >05/21



Vernis Blend

Electronic basin mixer for cold water or pre-adjusted water battery operation

Surfaces: **Chrome** Article Number: **71503000**



Spare part list

Year of production: >05/21

| Pos. | Description | Article Number | Price | PU |
|------|-------------------------------------|----------------|-------|----|
| 1 | mixer-hood | 94468000 | - | 1 |
| 2 | aerator M18x1 (5 l/min) | 94451000 | - | 1 |
| 3 | service tool | 93750000 | - | 1 |
| 4 | solenoid valve | 94453000 | - | 1 |
| 5 | O-ring 8x1,5 | 98423000 | - | 1 |
| 6 | fixing set (Ø 32) | 13961000 | - | 1 |
| 7 | connection hose 450 mm M8x0,75 G3/8 | 93405000 | - | 1 |
| 8 | O-ring 7x1,5 | 98422000 | - | 1 |
| 9 | filter packing | 95291000 | - | 1 |
| 10 | battery box | 94455000 | - | 1 |
| a | Thermostat | 15346000 | - | 1 |
| b | fixation extension 35 mm | 13898000 | - | 1 |